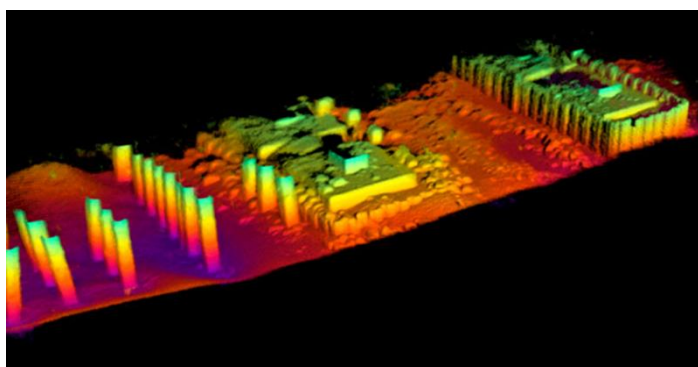


CATEGORY: Subsea Smart Tech. Coda Echoscope 3D Sonar

Engineered Tooling Solutions *FAST*



The Coda Echoscope® is a 3D imaging sonar. It can provide a complete viewing volume with a single ping, the Echoscope® uses phased array technology to process 16,000 beams simultaneously resulting in a three-dimensional sonar image.

Capable of up to twenty updates per second, the instantaneous co-registered 3D imagery from each ping allows visualisation of a whole scene in real time.

The Echoscope accepts motion sensor inputs to allow the data to be positioned accurately within a 3D space and mosaicked datasets to be created.

Features:

- Light Weight
- Compact
- High definition 3D sonar image generated in real-time
- Mosaicing capability
- Accurate even in turbid water
- Accurate geo-referenced data
- Real time solution

Specifications:

- | | |
|-------------------|--------------------------|
| • Dimensions | 380H x300W x160Dmm |
| • Weight in Air | 22kg |
| • Weight in Water | 12kg |
| • Power | 3 – 6A at 24Vdc |
| • Frequency | 375 and 610kHz |
| • Number of Beams | 128 x 128 (16,384 total) |
| • Minimum Rang | 1m |
| • Resolution | 3cm |
| • Depth rating | 600 or 3000msw |

Specifications subject to change without notice. All rights reserved.